

DBL

PLANFORMER

JENS KVORNING
PROFESSOR
KADK

NO

MASTERPLANS

ANDREAS FALUDI

What matters within cities – revolves around the
fact that they are places of social interaction
.... Cities are essentially dynamic

AMIN

PLANFORMER

TRANSFORMATIVE PRAXIS

WE ARE LIVING IN A INTRINSICALLY CHANGING,
FLUXING AND TRANSFORMING SOCIAL AND
PHYSICAL REALITY

TRANSFORMATIVE PRAXIS

THE CURRENT CHALLENGES CANNOT BE
TACKLED BY MEANS OF TRADITIONAL
APPROACHES

PLANFORMER

en ny planlægning må nødvendigvis have fokus på
planen som en kontinuert,
demokratisk, dynamisk og elastisk proces
Ikke planen som et statisk
mål i sig selv

Løkken / Haggärde

STRATEGISK BYPLANLÆGNING

STRATEGIC PLANNING IS SELECTIVE AND ORIENTED TO ISSUES THAT REALLY MATTER. AS IT IS IMPOSSIBLE TO DO EVERYTHING THAT NEEDS TO BE DONE, **STRATEGIC** IMPLIES THAT SOME DECISIONS AND ACTIONS ARE CONSIDERED MORE IMPORTANT THAN OTHERS AND THAT MUCH OF THE PROCESS LIES IN MAKING THE TOUGH DECISIONS ABOUT WHAT IS MOST IMPORTANT FOR THE PURPOSE OF PRODUCING FAIR, STRUCTURAL RESPONSES TO PROBLEMS, CHALLENGES, ASPIRATIONS AND DIVERSITY

ALBRECHTS

STRATEGISK BYPLANLÆGNING

STRATEGISING – THE DRAWING OUT OF A SENSE OF POTENTIALITIES AND POSIBILITIES FROM MULTIPLE UNFOLDING RELATIONS, WITHIN WHICH TO SET ACTIONS, THAT WILL INTERVENE IN THESE UNFOLDING RELATIONS, IN THE HOPE OF FURTHERING PARTICULAR OBJECTIVES AND QUALITIES

PATSY HEALEY

STRATEGISK BYPLANLÆGNING

STRATEGIC THINKING INVOLVES A WAY OF THOUGHT, IN WHICH EVENTS, EPISODES AND POSIBILITIES ARE CONTINUOUSLY INTERPRETED IN TERMS OF THEIR SIGNIFICANCE FOR AN ENTREPRISE AS IT EVOLVES OVER TIME IN A SPECIFIC AND DYNAMIK CONTEXT.

PATSY HEALEY

STRATEGISK BYPLANLÆGNING

STRATEGIC PLANNING MUST:

IRRIGATE TERRITORIES WITH POTENTIAL

ACCOMMODATE PROCESSES THAT REFUSE TO BE CRYSTALLIZED
INTO DEFINITIVE FORM

DENY BOUNDARIES AND EXPAND NOTIONS

DISCOVER UNNAMEABLE HYBRIDS

KOOLHAAS

PLANFORMER

IT IS STRATEGIC THINKING AND ACTING THAT ARE
IMPORTANT,
NOT STRATEGIC PLANNING.

INDEED, IF ANY PARTICULAR APPROACH TO STRATEGIC
PLANNING GETS IN THE WAY OF STRATEGIC
THOUGHT AND ACTION, THAT PLANNING APPROACH
SHOULD BE SCRAPPED

BRYSON

STRATEGIC PLANNING KAUFMAN

originated in the private sector tied to needs for rapidly changing and growing corporations

PLANNING EFFECTIVELY FOR AND MANAGE FUTURES
WHEN THE FUTURES ITSELF SEEMED TO BE
INCREASINGLY UNCERTAIN

THE ENTREPRENEURIAL SCHOOL

DEPICTS

STRATEGY MAKING AS THE VISIONARY PROCESS OF A STRONG
LEADER

THE LEARNING SCHOOL

FINDS

STRATEGY TO EMERGE IN A PROCESS OF COLLECTIVE LEARNING

(MINTZBERG)

NO

MASTERPLANS

ANDREAS FALUDI

PLANFORMER

PLANLÆGNINGEN MÅ VÆRE

STRATEGISK

FLEKSIBEL

FLUID

ELASTISK

RESILIENT

SPÆNDSTIG

ROBUST

PLANFORMER

IT IS STRATEGIC THINKING AND ACTING THAT ARE IMPORTANT
NOT STRATEGIC PLANNING.

INDEED, IF ANY PARTICULAR APPROACH TO STRATEGIC PLANNING
GETS IN THE WAY OF STRATEGIC THOUGHT AND ACTION, THAT
PLANNING APPROACH SHOULD BE SCRAPPED

BRYSON



PÅSTAND:

DE RUMLIGE KVALITETER ER EN
KVALITETS OG KONKURRENCEPARAMETER
OG MÅ VÆRE EN DEL AF EN (STRATEGISK) PLANLÆGNING

PLANNING DISCOURSE / JAMES THROGMORTON

PLANNING IS AN EXERCISE IN PERSUASIVE STORYTELLING

PLANNERS ARE AUTHORS WHO WRITE TEXTS THAT CAN BE READ AND INTERPRETATED IN DIVERSE AND OFTEN CONFLICTING WAYS

SUCH FUTURE ORIENTED STORIES GUIDE READERS SENSE OF WHAT IS POSSIBLE AND DESIRABLE, AND – IF TOLD WELL - ENABLE READERS TO ENVISION DESIRABLE TRANSFORMATION IN THEIR CITIES, FEEL INSPIRED TO ACT AND BELIEVE THAT THEIR ACTIONS WILL ACTUALLY HAVE AN EFFECT.

FRIEDMANN OM UTOPIENS FUNKTION OG NØDVENDIGHED

Utopian thinking: The capacity to imagine a future that departs significantly from what we know to be the general conditions in the present. It is a way of breaking through the barriers of convention into a sphere of imagination where many things beyond our everyday experience becomes feasible.

All of us have this ability, which is inherent in human nature because human beings are insufficiently programmed for the future. We need a constructive imagination that we can variously use for creating fictive worlds. Some of these worlds can be placed in the past, others in the future and some like Dante's *Divina Comedia* even in the afterlife.

There are always limitations on purposive actions – of leadership, power, resources, knowledge. But if we begin with limitations, rather than with images of the desirable future, we may never arrive at utopian constructs with the power to generate the passion necessary for a social movement that might bring us a few steps closer to the vision they embody

STRATEGISK BYPLANLÆGNING

TRANSFORMATIVE PRAXIS

BREAKS FREE FROM CONCEPTS, STRUCTURES, AND
IDEAS, THAT ONLY PERSIST BECAUSE OF THE
PROCESS OF CONTINUITY

THAT WHICH MIGHT BECOME MUST BE IMPOSED ON
WHAT IS IN PURPOSE OF CHANGE WHAT IS INTO
WHAT MIGHT BECOME

PLANFORMER

HAR MASTERPLANEN EN ROLLE

SOM

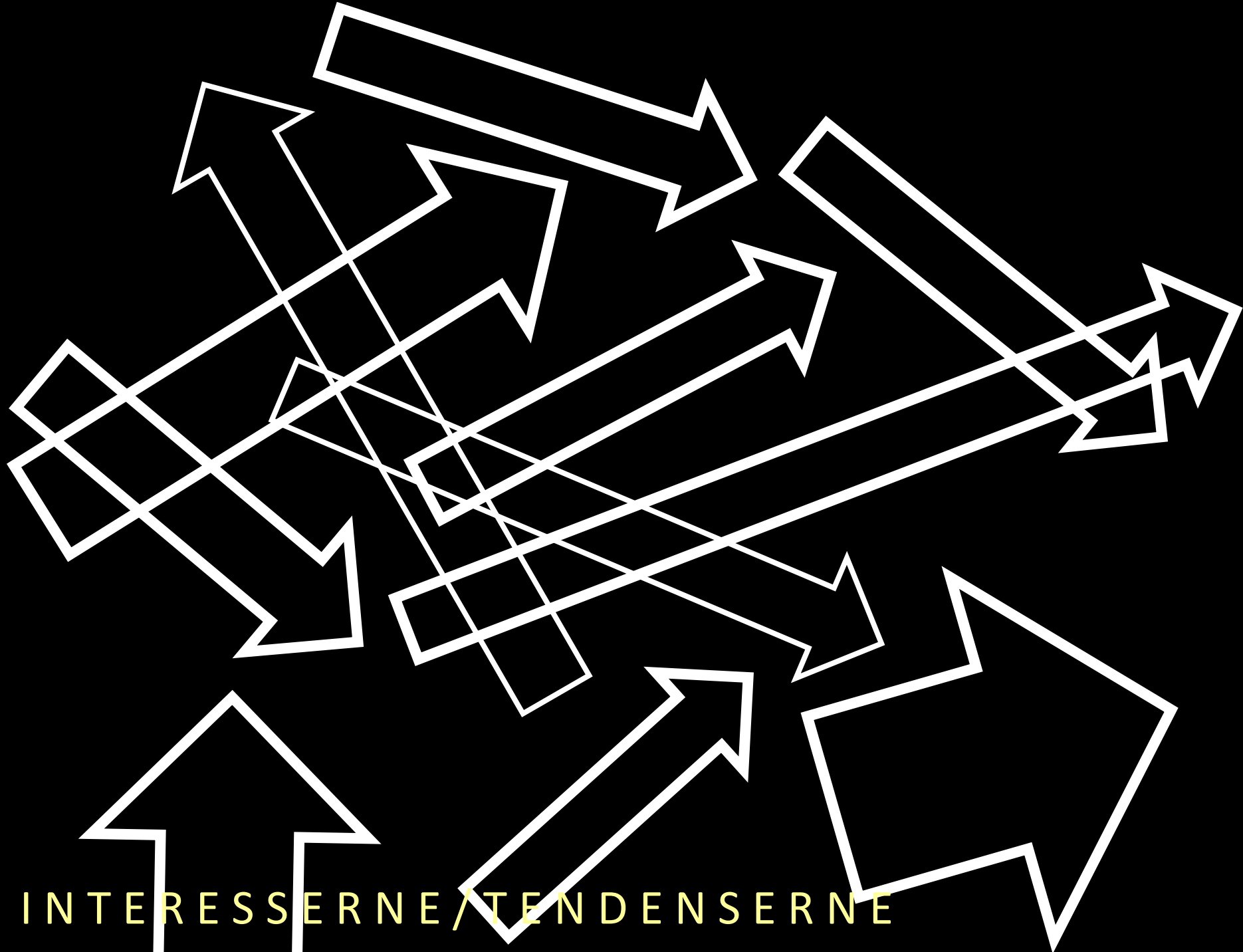
FORSTÅELIGT LEDEBILLEDE

OG

PERSUASIVE STORRYTELLING

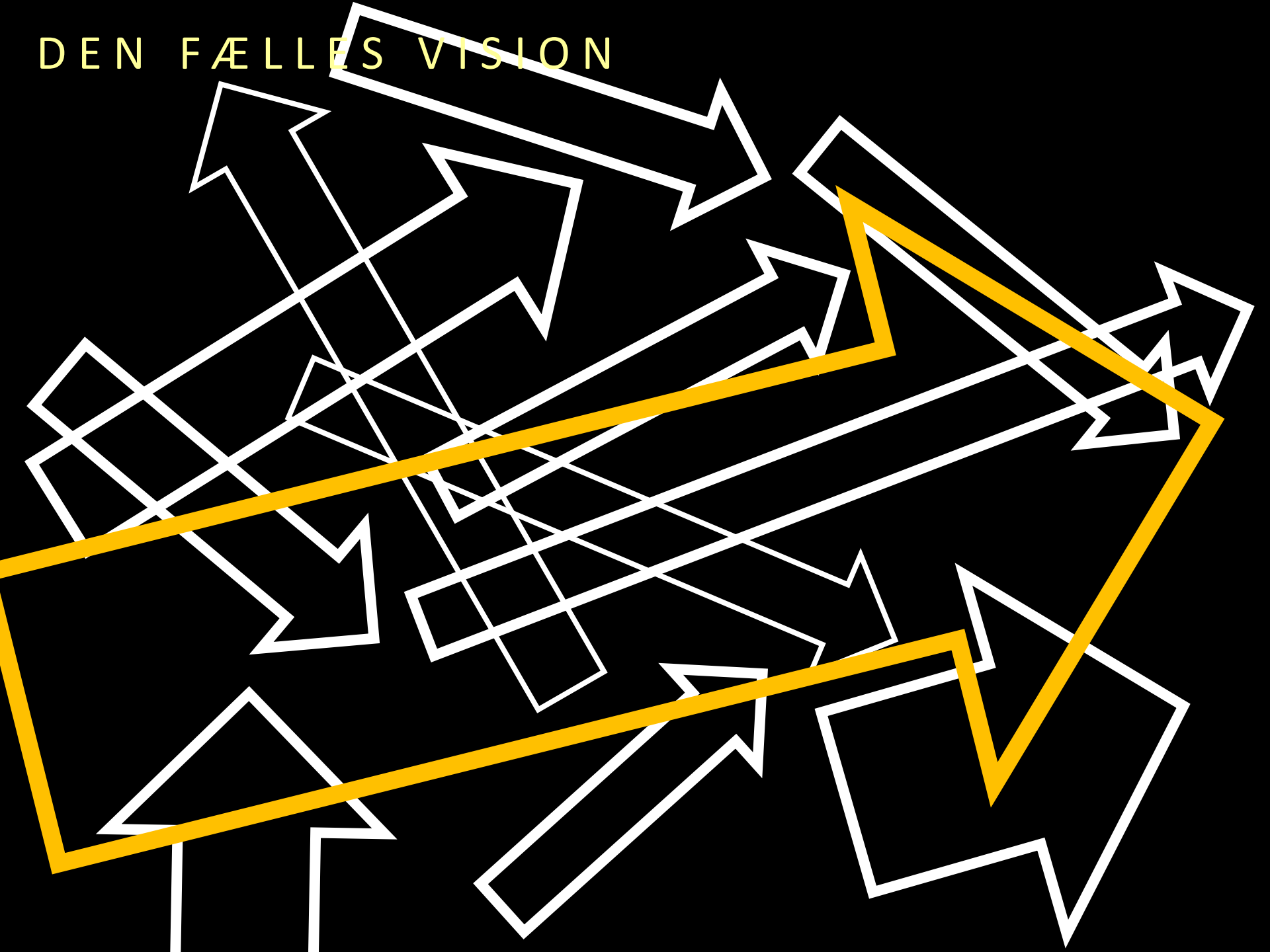
|

TRANSFORMATIVE PRAXIS

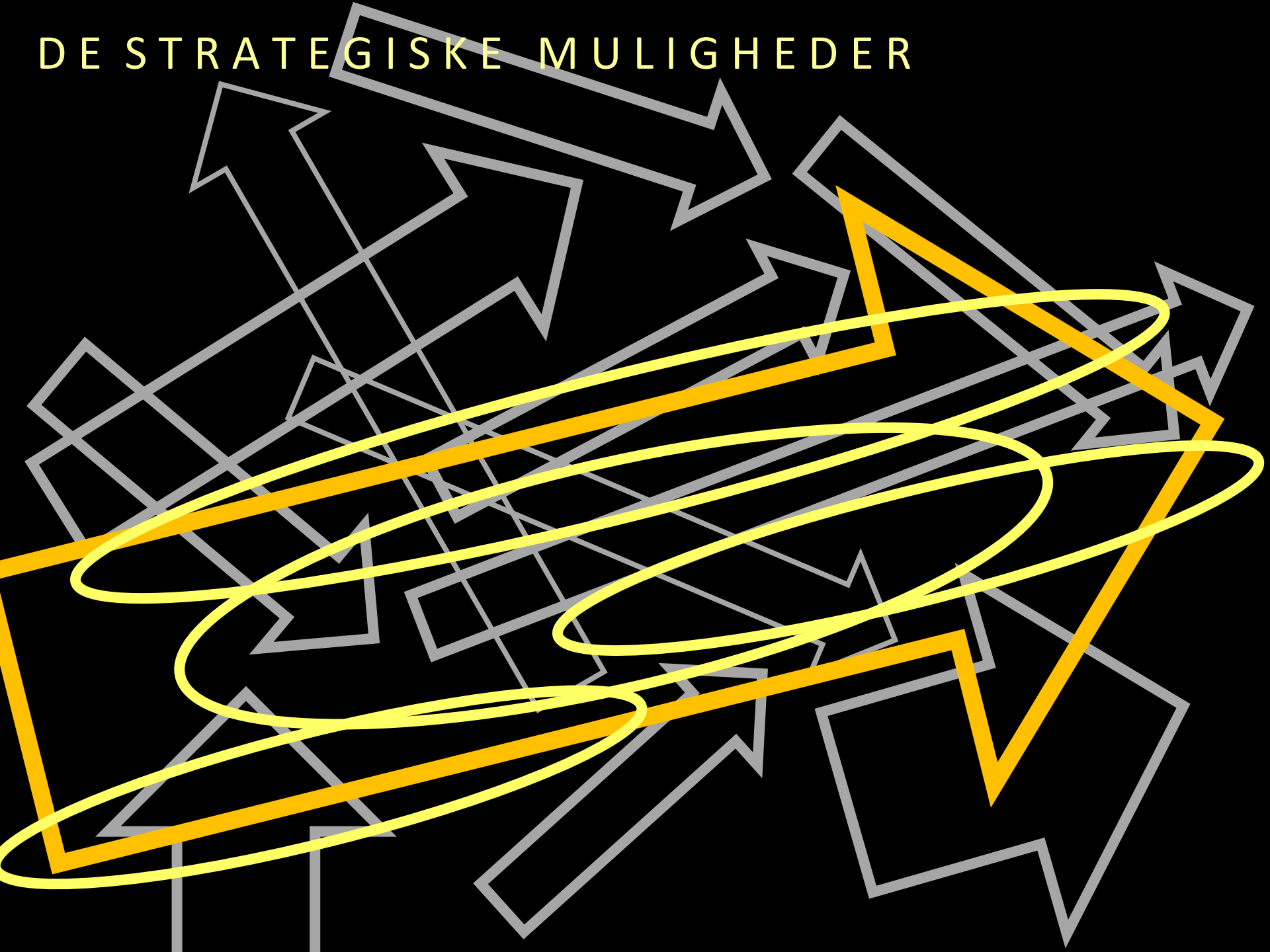


INTERESSERNE/TENDENSERNE

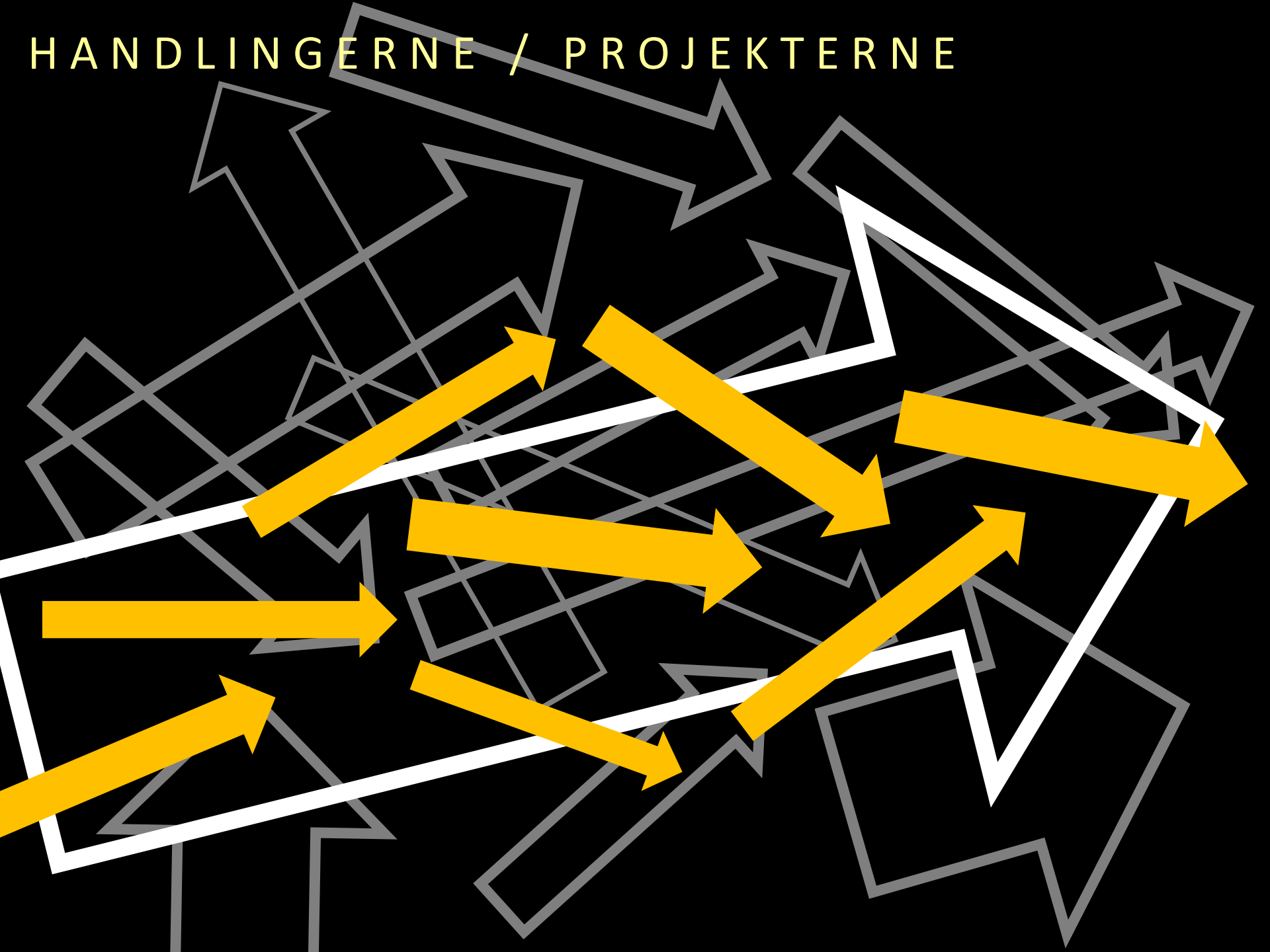
DEN FÆLLES VISION



DE STRATEGISKE MULIGHEDER



HANDLINGERNE / PROJEKTERNE



HANDLINGERNE / PROJEKTERNE

HVORDAN GØR VI

EN

KOMPLEKS

FLEKSIBEL

FLYDENDE

STRATEGISK PLANLÆGNING

FORSTÅELIG OG ENGAGERENDE

PLANFORMER

HAR MASTERPLANEN EN ROLLE
SOM
FORSTÅELIGT LEDEBILLEDE
OG
PERSUASIVE STORRYTELLING

PLANFORMER

MASTERPLANEN
HELHEDSPLANEN

An aerial photograph of a city grid, likely Milan, with a semi-transparent blue overlay. The text is centered over the image.

The ethical principle of Bicocca

Among the many "city concepts" that are being realised in Milan's empty urban spaces, the Bicocca area is the only one with its well-defined identity.

MASTERPLANEN

er lukket / kan ikke optage ændringer /
afskærer involvering og ejerskab

MASTERPLANEN

Er nødvendig for at fastholde kvaliteter og
koordinere forskellige delprocesser
- Og som billede på mulige fremtider ??

MASTERPLANEN

er lukket / kan ikke optage ændringer /
afskærer involvering og ejerskab

MASTERPLANEN

Er nødvendig for at fastholde kvaliteter og
koordinere forskellige delprocesser
- Og som billede på mulige fremtider ??

MASTERPLANEN DISKUSSION

1

STRATEGISK PLANLÆGNING – TYPER



Thus, the Strategic Metropolitan Plan of Barcelona is an instrument designed to:

Anticipate future challenges;

Provide the necessary changes to meet such challenges;

Promote the participation of all the agents involved;

Enable a consensus among differing interests;

Prioritise decisions.

The Strategic Metropolitan Plan of Barcelona (PEMB) stands as a model due to its ongoing work towards offering visions for the future, anticipating new challenges, preventing possible threats and, in summary, making proposals that strengthen Barcelona and its metropolitan area as the international reference that it is today.

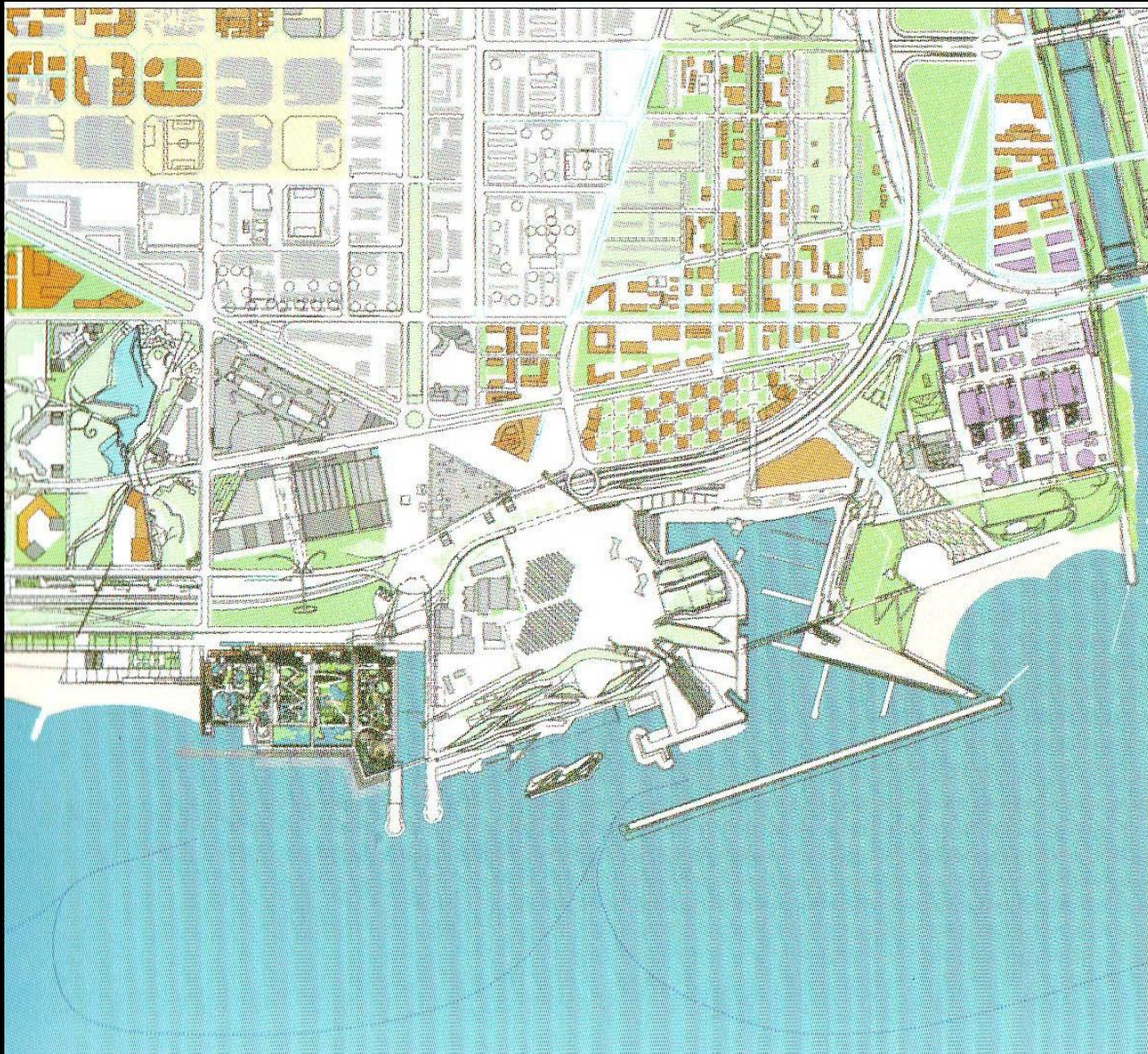
The PEMB is, undoubtedly, a city platform that works under the premise of consensus and with the broad participation of both the public and the private sectors. It is a meeting point and vehicle for reflection among the municipalities, institutions and social agents that promote and contribute ideas for the economic and social development of the



REHABILITATION / RESTRUCTURING

An aerial photograph of a city with a dense street grid. A strategic plan is overlaid on the image, featuring several key elements: a large, irregularly shaped area in the upper left corner, possibly a waterfront or industrial zone, highlighted in light blue; a network of white lines representing major roads or transit routes crisscrossing the city; and several green-shaded areas indicating parks, green spaces, or specific development zones. The overall image has a halftone or dithered texture.

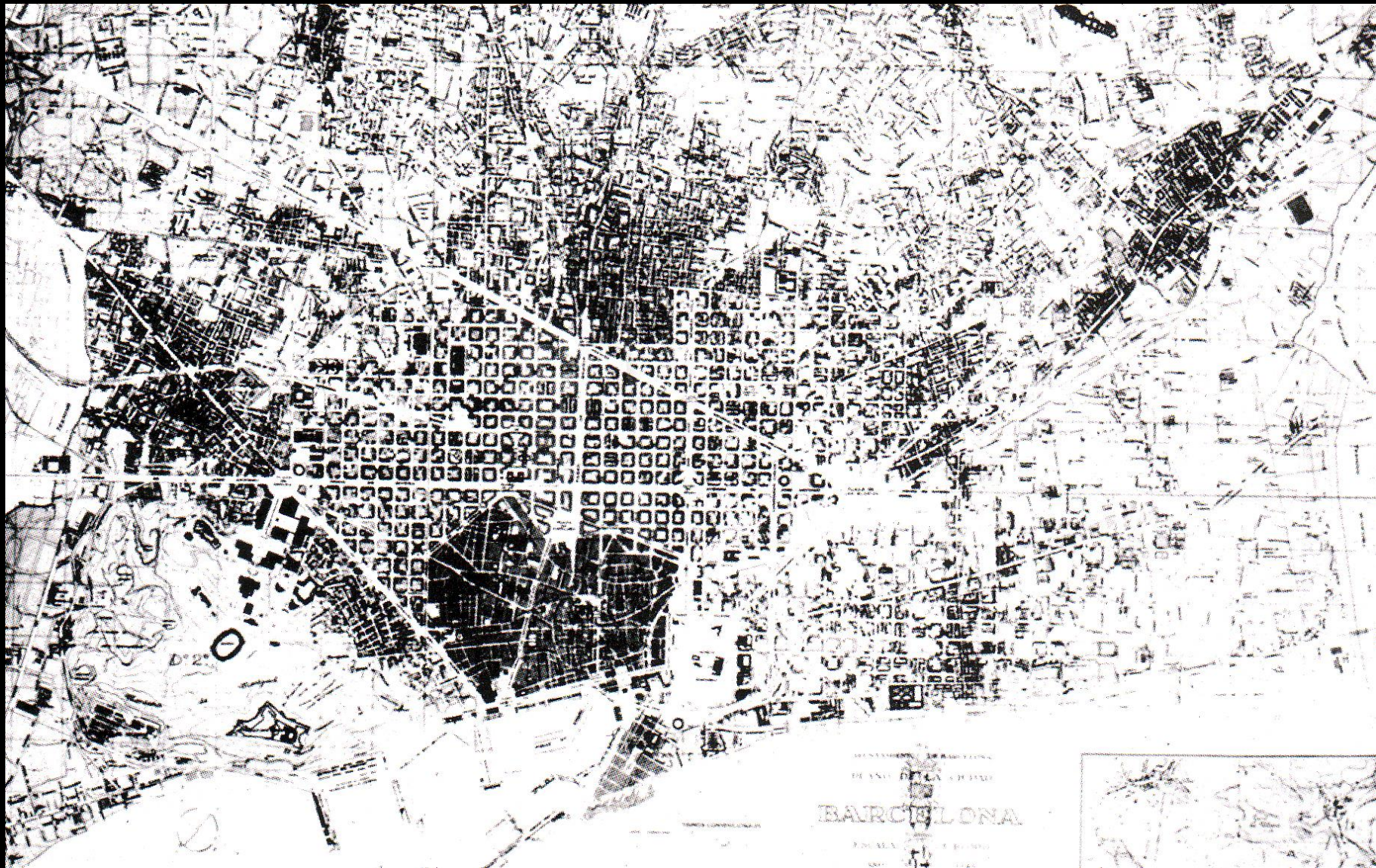
STRATEGISK PLAN – MAKSIMERE SYNERGIER







22@

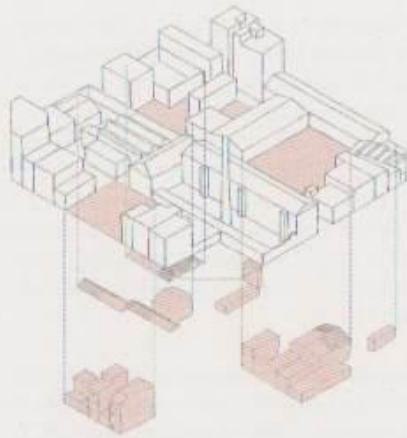




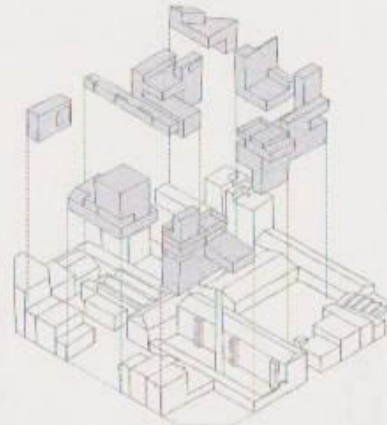




Fase 1: Reconeixement amb precisió de cadascuna de les illes de cases, detectant les seves problemàtiques i expectatives de creixement.



Fase 2: Buidat d'edificacions obsoletes i reconeixement dels buits.



Fase 3: Reomplert de les noves edificacions.



Fase 4: Aperçó a la tota de carrer de nous espais públics. Regeneració de les edificacions existents i generació d'emergències d'ús col·lectiu.











HORIZONTAL

BOUTIQUE
TEMPER
PUBBLICITÀ

P

el

Tap



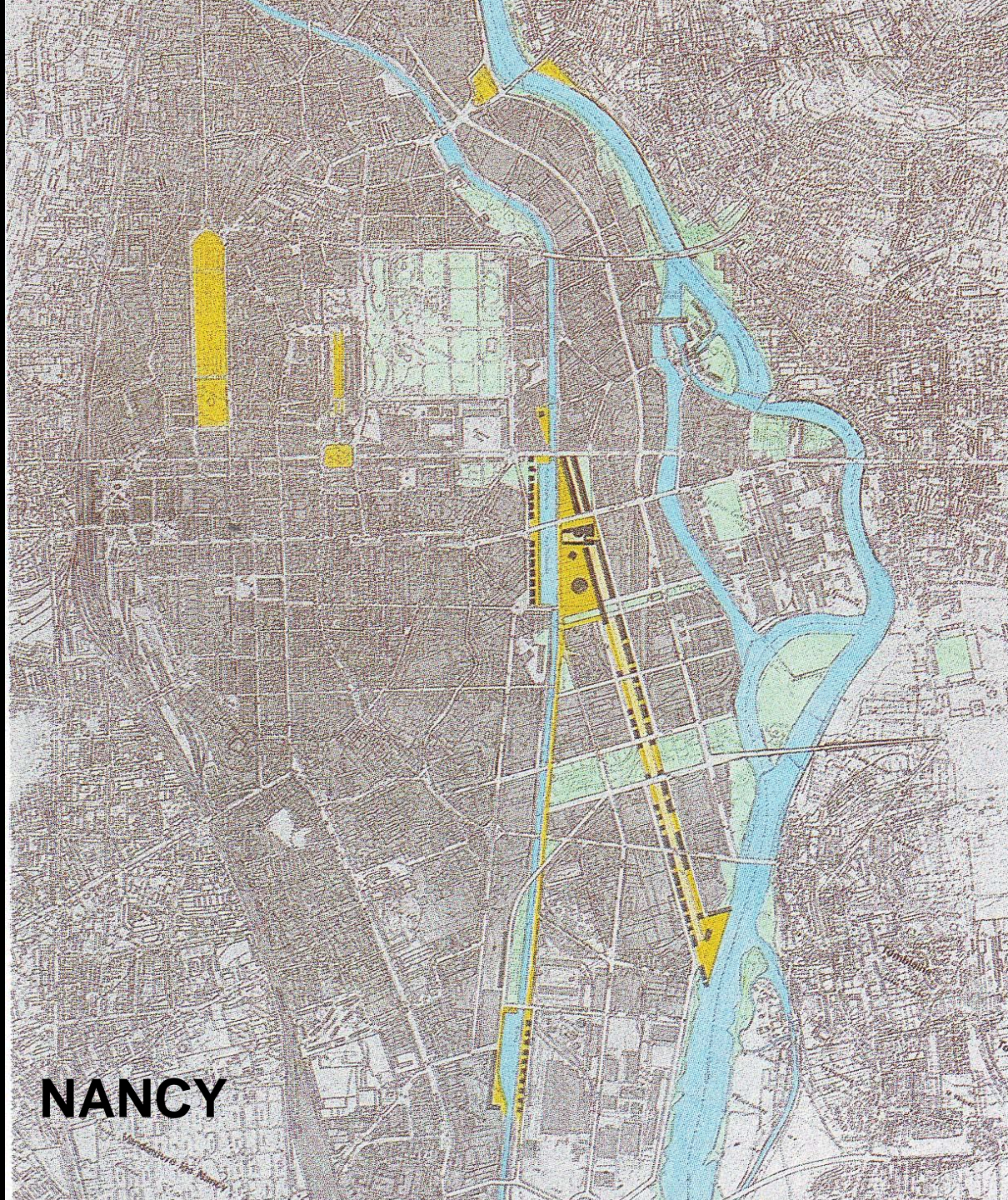




MASTERPLANEN DISKUSSION

2

NANCY

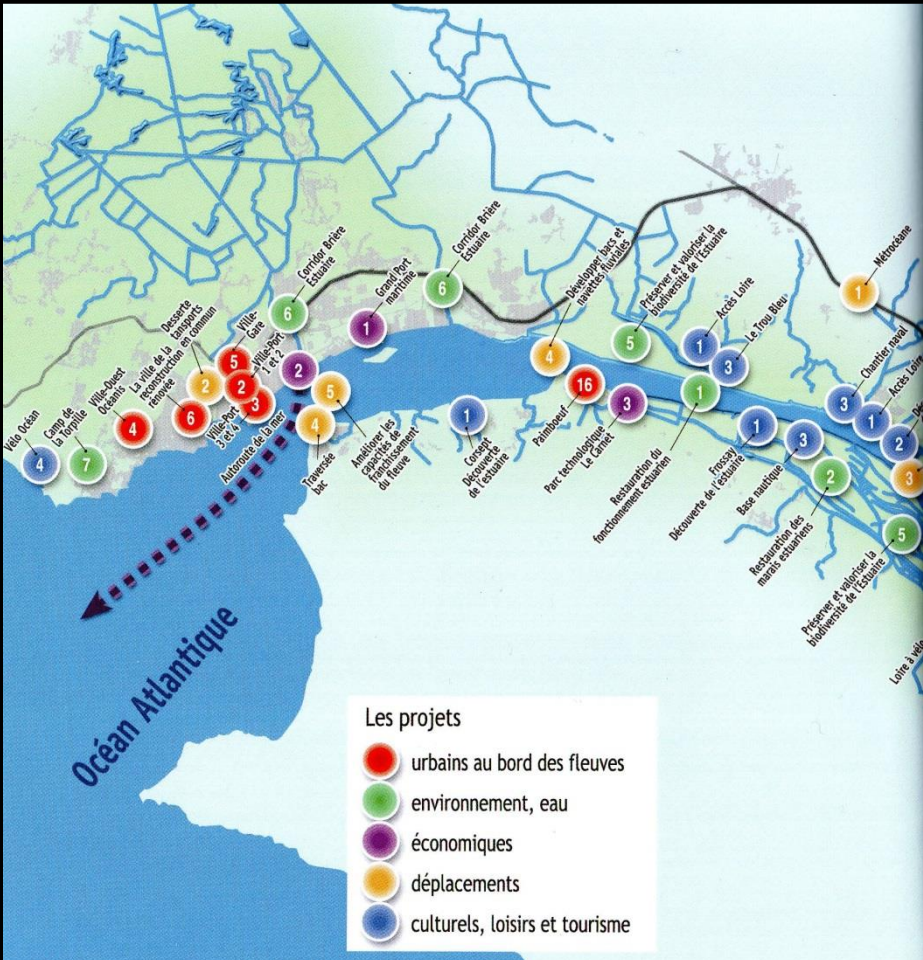


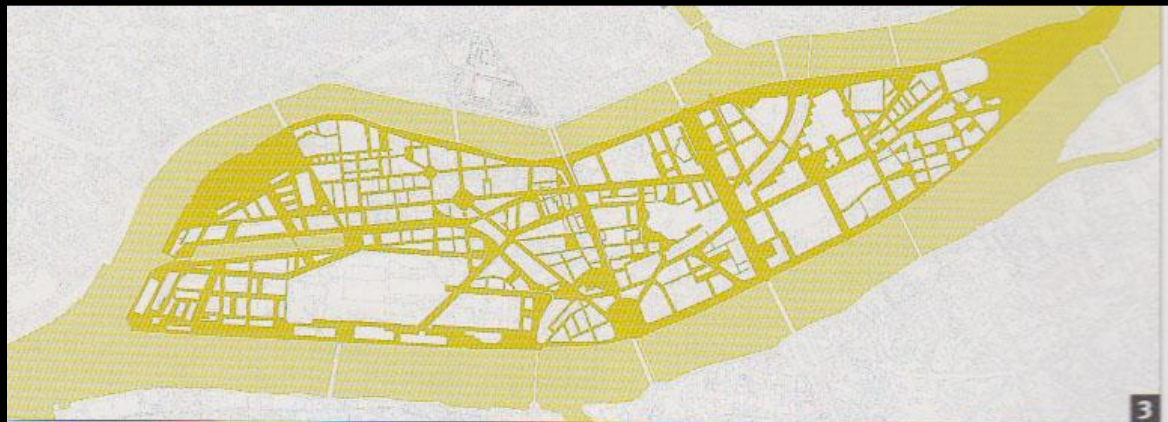
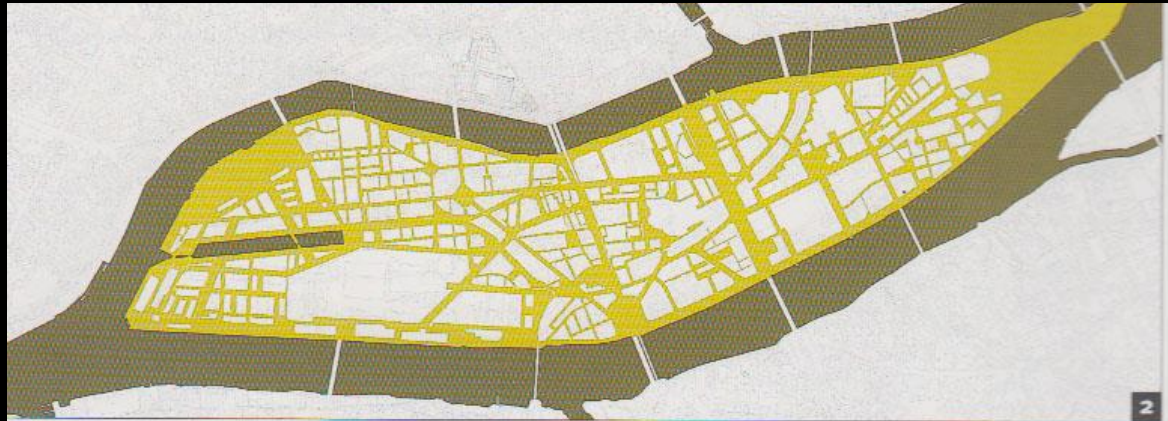
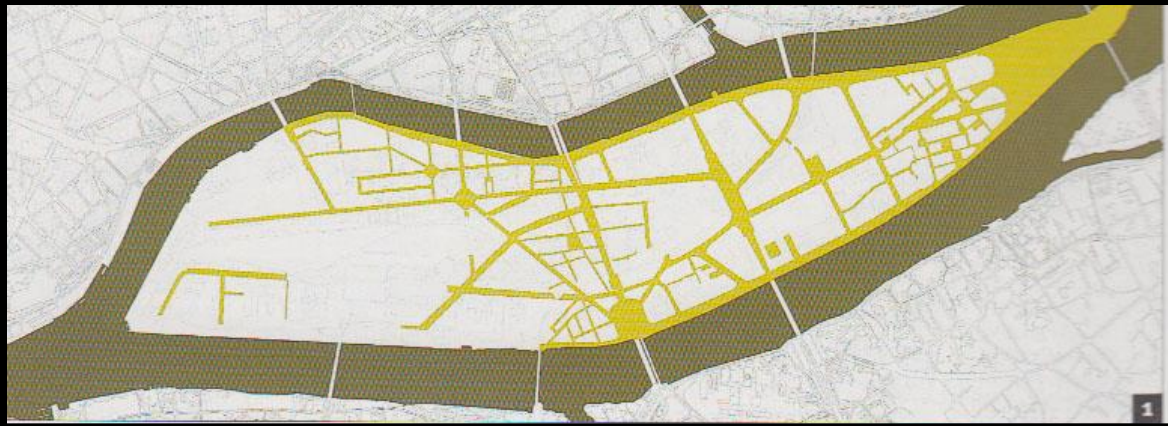


**SPILLEPLADE
OG
ÅBNINGSTRÆK
GAME BOARD
+
OPENING DRIVE**

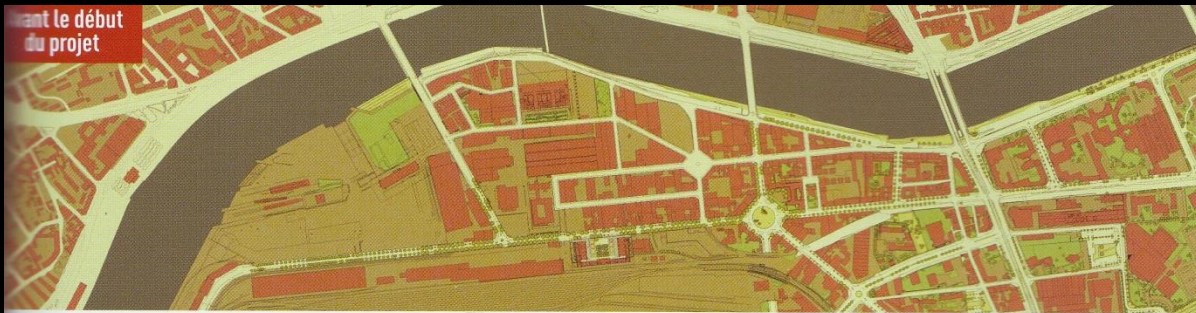
NANCY

REGIONAL AGREEMENT ON PROJECTS PROTECTING / ENHANCING / FRETILIZING / DEVELOPING NATURAL AND CULTURAL RESOURCES

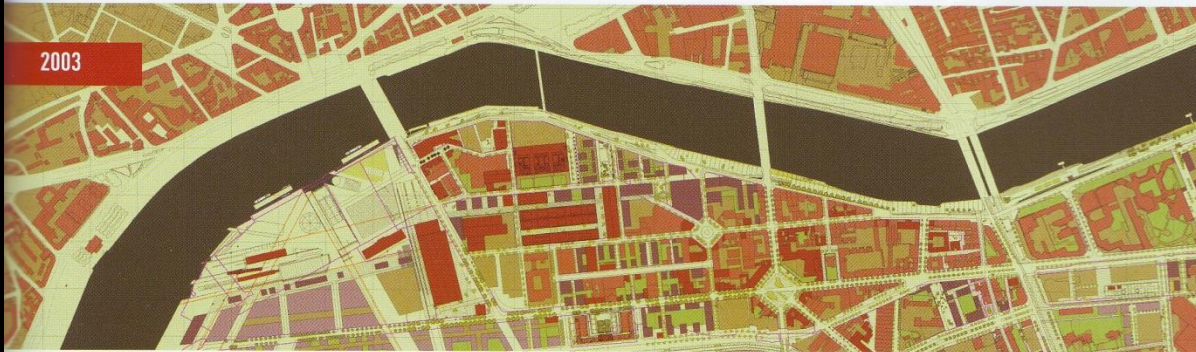




avant le début
du projet



2003



2006



2008









45 minutes au sec. 08:33

Palais de Justice

Tribunal de Commerce







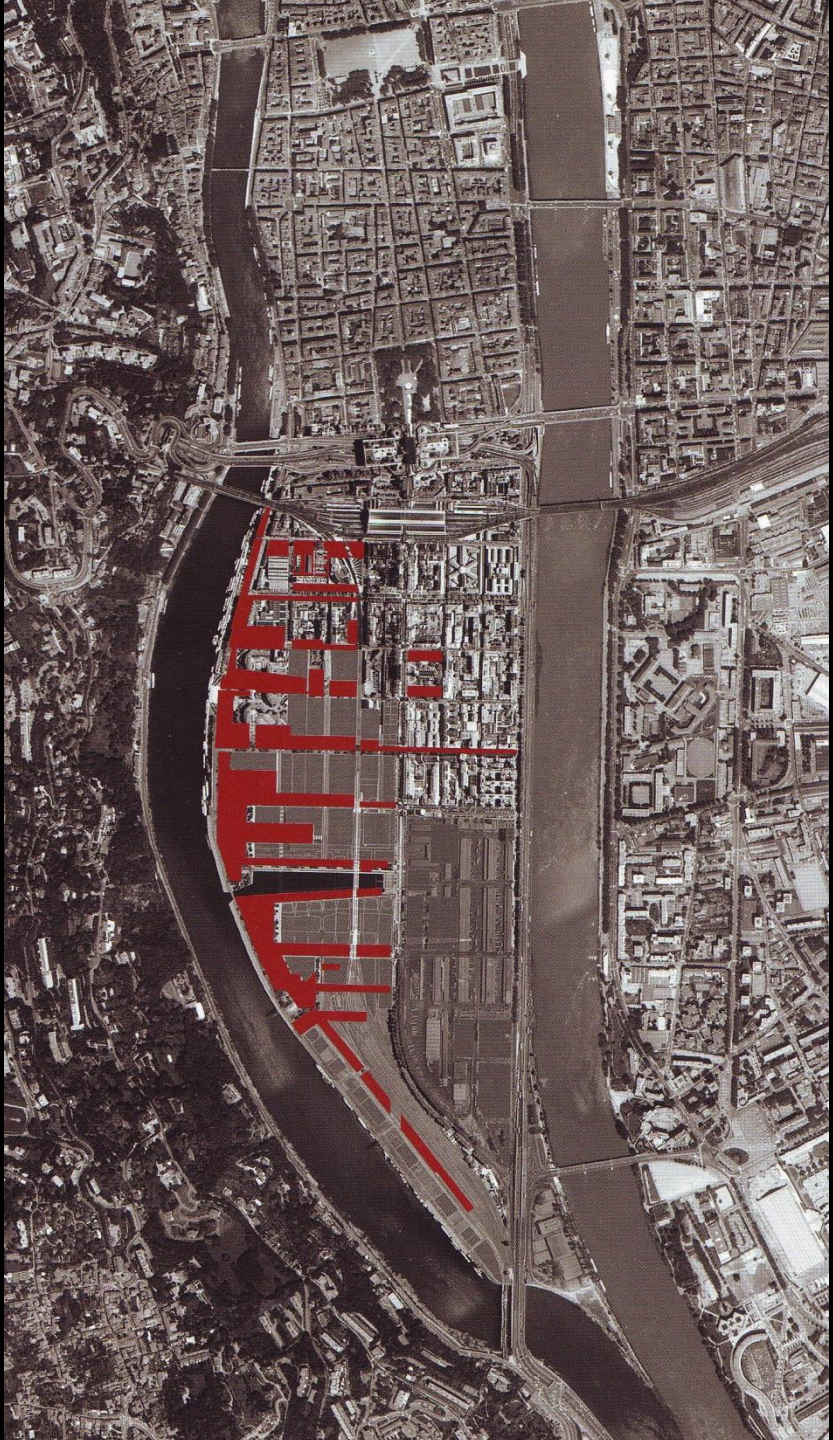
RENAULT 19

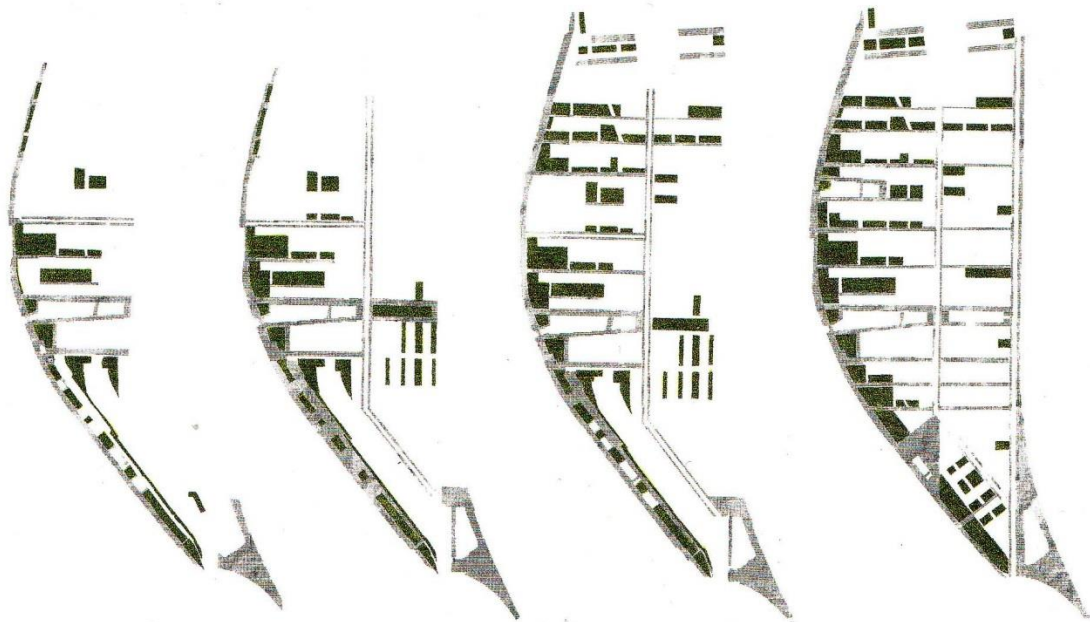
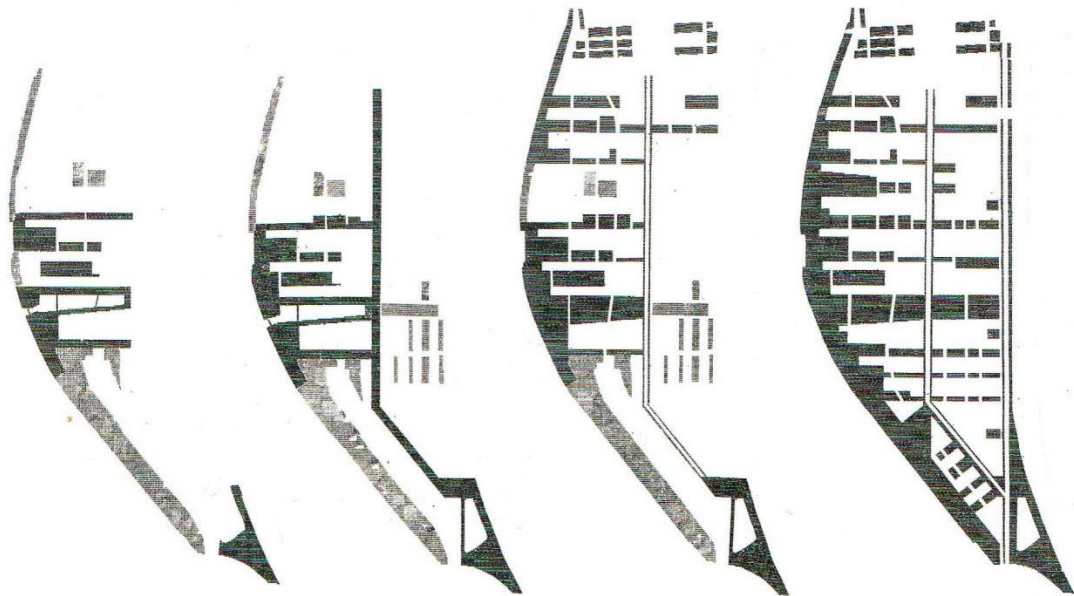
3715 XT 44

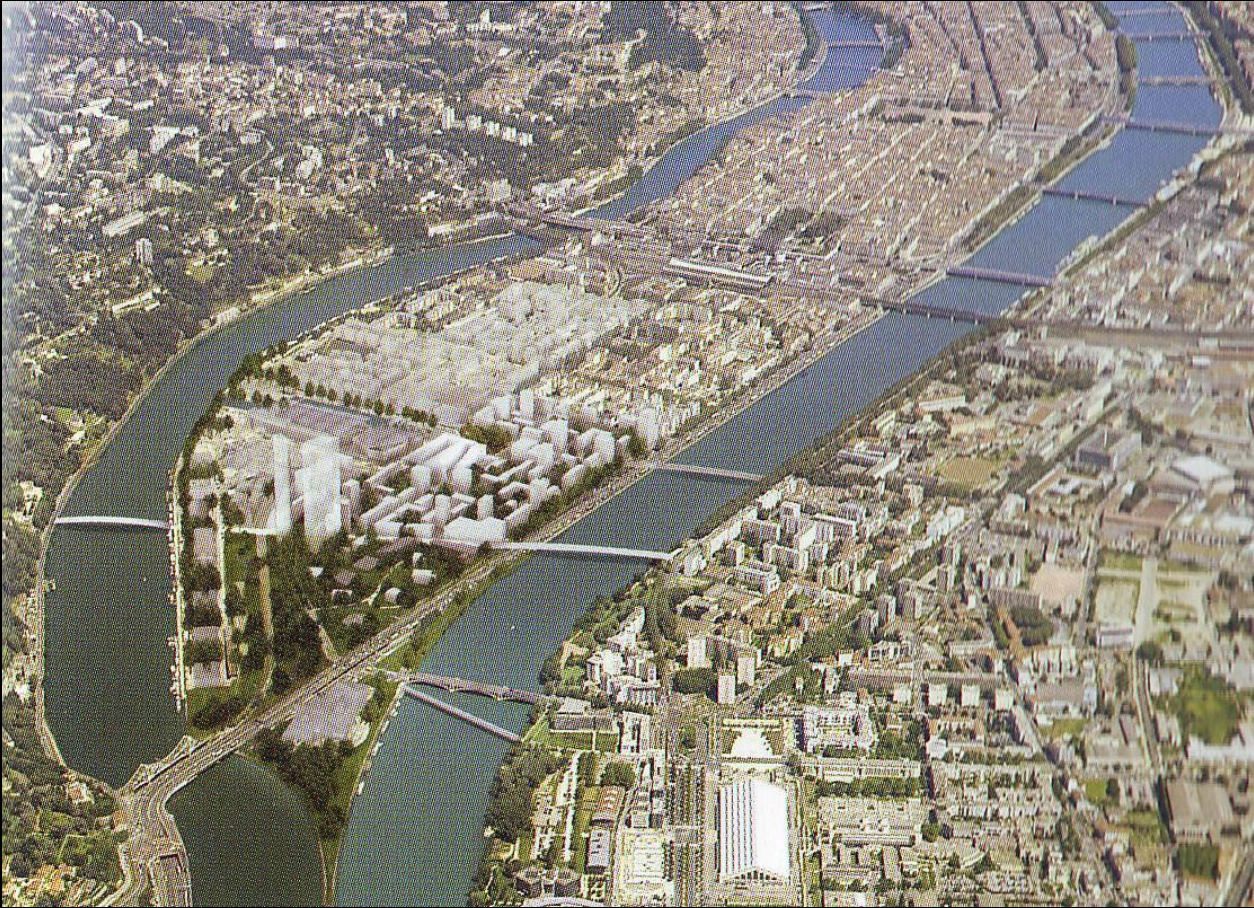
MASTERPLANEN DISKUSSION

3













MASTERPLANEN DISKUSSION

4



ABCDEF
GHIJK

SÄSÅD I 1247
en dag på stranden / spisskap 1247
praxis / fotofunderser
GION 1247
prefiguraton / lund
GION

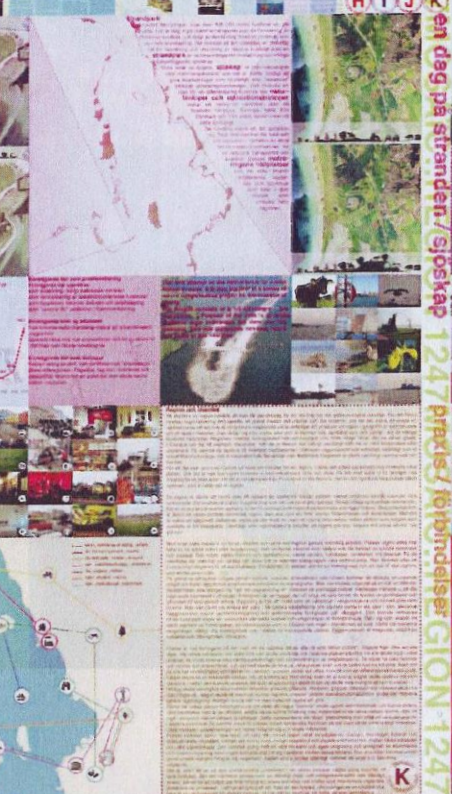
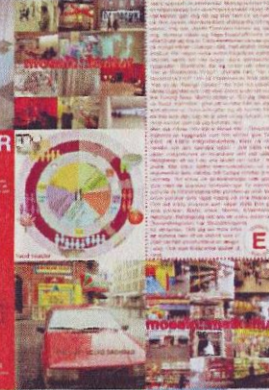
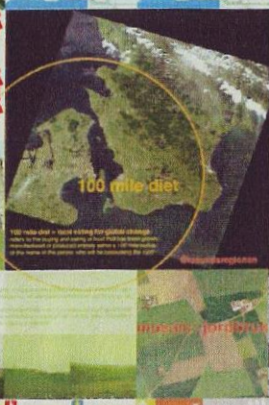
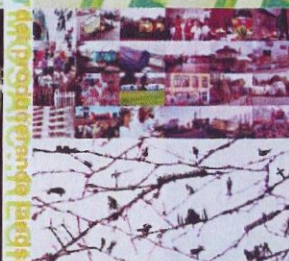
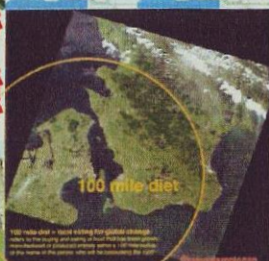
1247: nya hierarkier / urbanitet
en dag på stranden / landskap 247
praxis / mötet
REGION 1247
nya hierarkier / urbanitet

1247: nya hierarkier / urbanitet
en dag på stranden / spisskap 1247
praxis / fotofunderser
GION 1247
prefiguraton / lund
GION

1247: nya hierarkier / urbanitet
en dag på stranden / spisskap 1247
praxis / fotofunderser
GION 1247
prefiguraton / lund
GION



Text describing urban and coastal development, possibly related to the 'station::strand' concept.



MASTERPLANEN DISKUSSION

5

PLANFORMER

VISIONEN

det forståelige billede / masterplanen kan måske være en del af dette billede / persuasive storytelling

DE STRATEGISKE MULIGHEDER

Hvilke muligheder er der for at realisere visionen / komme i den rigtige retning

STRATEGIEN

Som skal være fleksibel / robust / revideres / opdateres / kan være svær at forstå

PROJEKTERNE

Som der skal sikres opbakning til / som skal være forståelige

MASTERPLANEN / MASTERPLANERNE

Som beskriver projekterne og sikrer deres gennemførelse

PLANFORMER
MEN

DE
VISIONEN

det forståelige billede / masterplanen kan måske være en del af dette billede / persuasive storytelling

OPTRÆDER
DE STRATEGISKE MULIGHEDER

Hvilke muligheder er der for at realisere visionen / komme i den rigtige retning

IKKE
STRATEGIEN

Som skal være fleksibel / robust / revideres / opdateres / kan være svært at forstå

LINEÆR PROCES
PROJEKTERNE

Som der skal sikres opbakning til / som skal være forståelige

OG ER IKKE
MASTERPLANEN / MASTERPLANERNE

Som beskriver projekterne og sikrer deres gennemførelse

MODSÆTNINGER

RUHR / EMSCHER PARK

LEITPLANUNG

EMSCHER LANDSCHAFTSPARK

STRATEGY + PROJECT

Masterplan + strategi + masterplaner

Landschaftspark West
Regionaler Grünzug A

Fretzfelde Landschaftspark
Regionaler Grünzug B

Ökologischer Landschaftspark
Regionaler Grünzug C

Regionaler Grünzug D

Regionaler Grünzug E

Regionaler Grünzug F

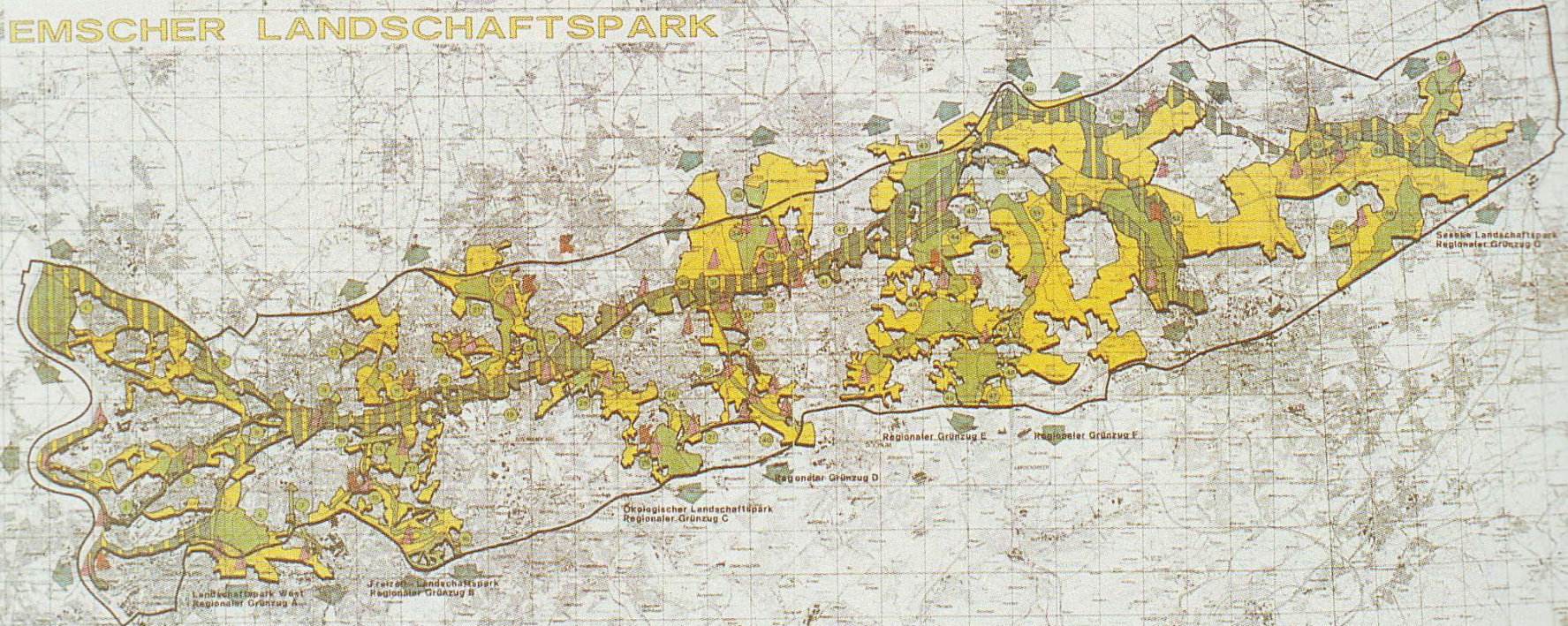
Sesselberg Landschaftspark
Regionaler Grünzug G

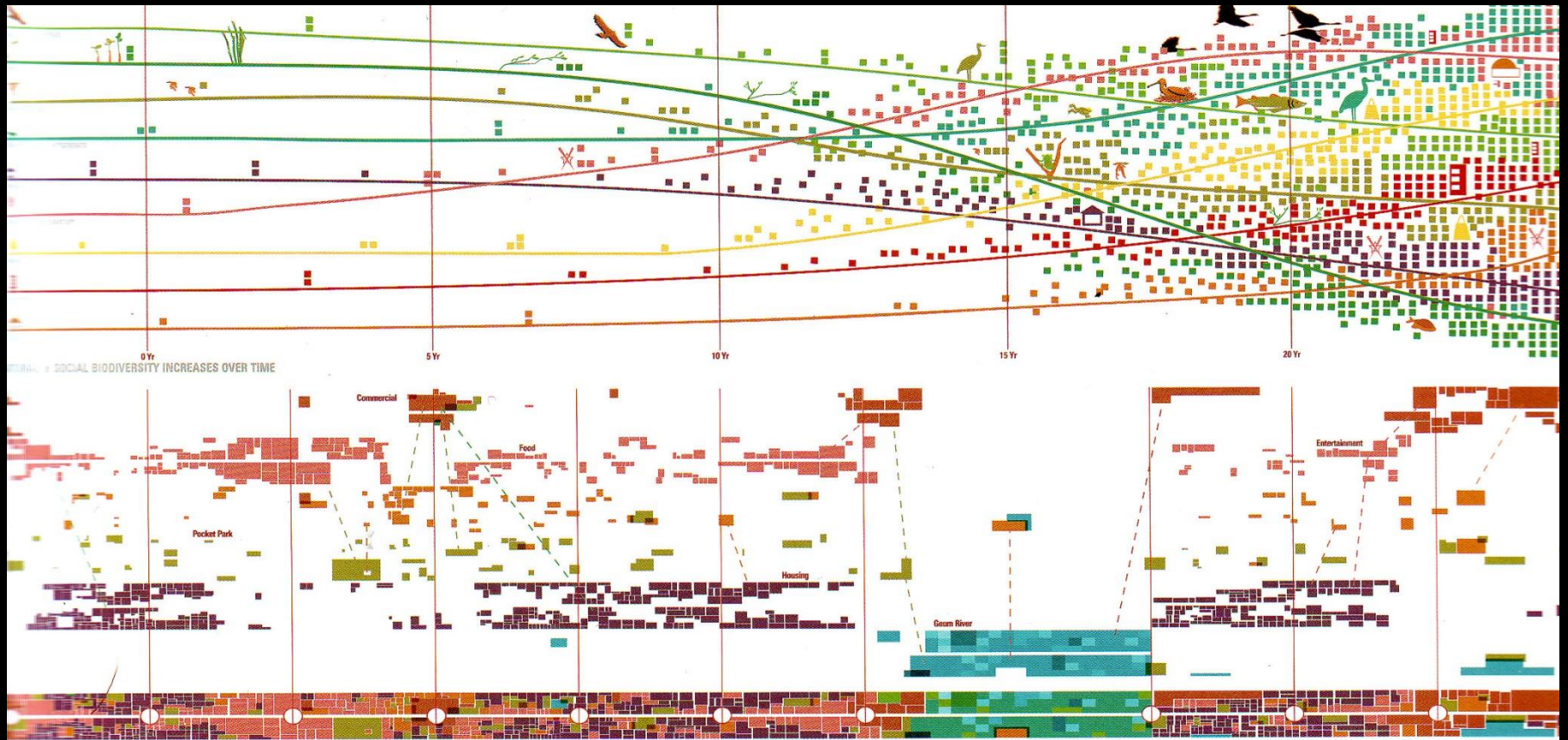


THE REGIONAL CITY RUHR / EMSCHER PARK

LEITPLANUNG

EMSCHER LANDSCHAFTSPARK





TRANSFORMATION
 HOW TO INCREASE
 THE SOCIAL AND SPATIAL COMPLEXITY
 AND THE QUALITY OF SPACE

PLANFORMER

NO

MASTERPLANS

måske skulle mr. Faludi åbne for
en lidt større grad af
kompleksitet og overlapning
mellem forskellige planformr